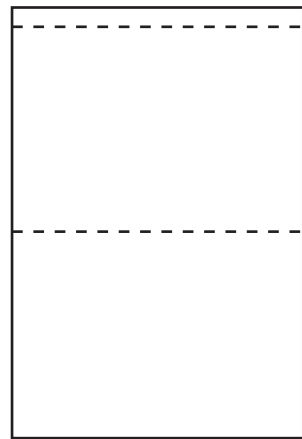
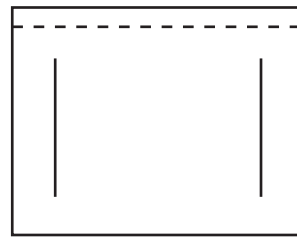


## TWO TAB SLIDER CARD

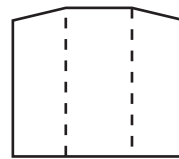
1. Cut out the templates and fold along any score lines. You will need 2 of Panel C.



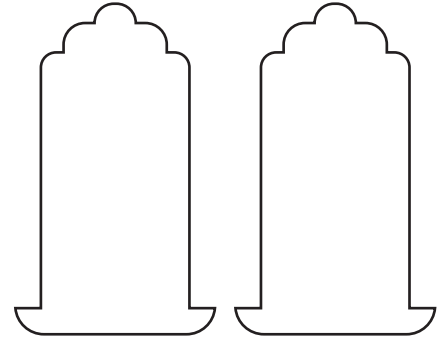
Panel A



Panel B

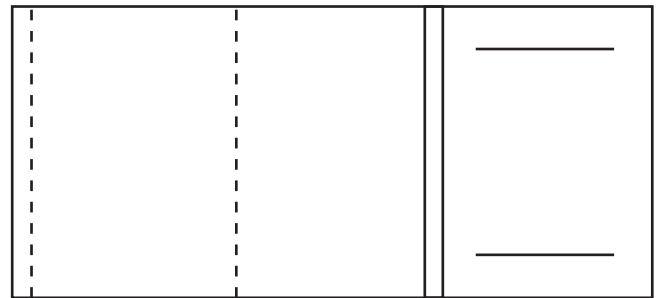


Stand



Panel C

2. Stick Panel B to Panel A using the tab with double sided tape or glue.



3. Feed one of the Panel C pieces through the right slot on Panel B, going in through the front of the card outwards. Feed the second Panel C piece through the left slot, going in through the back of the card outwards. These are your two sliding tabs.

4. Fold around the base card to conceal the sliding tabs and secure closed using the tab. Add the stand to the back of the card if you wish. Your Two Tab Slider is now ready to decorate and embellish.

