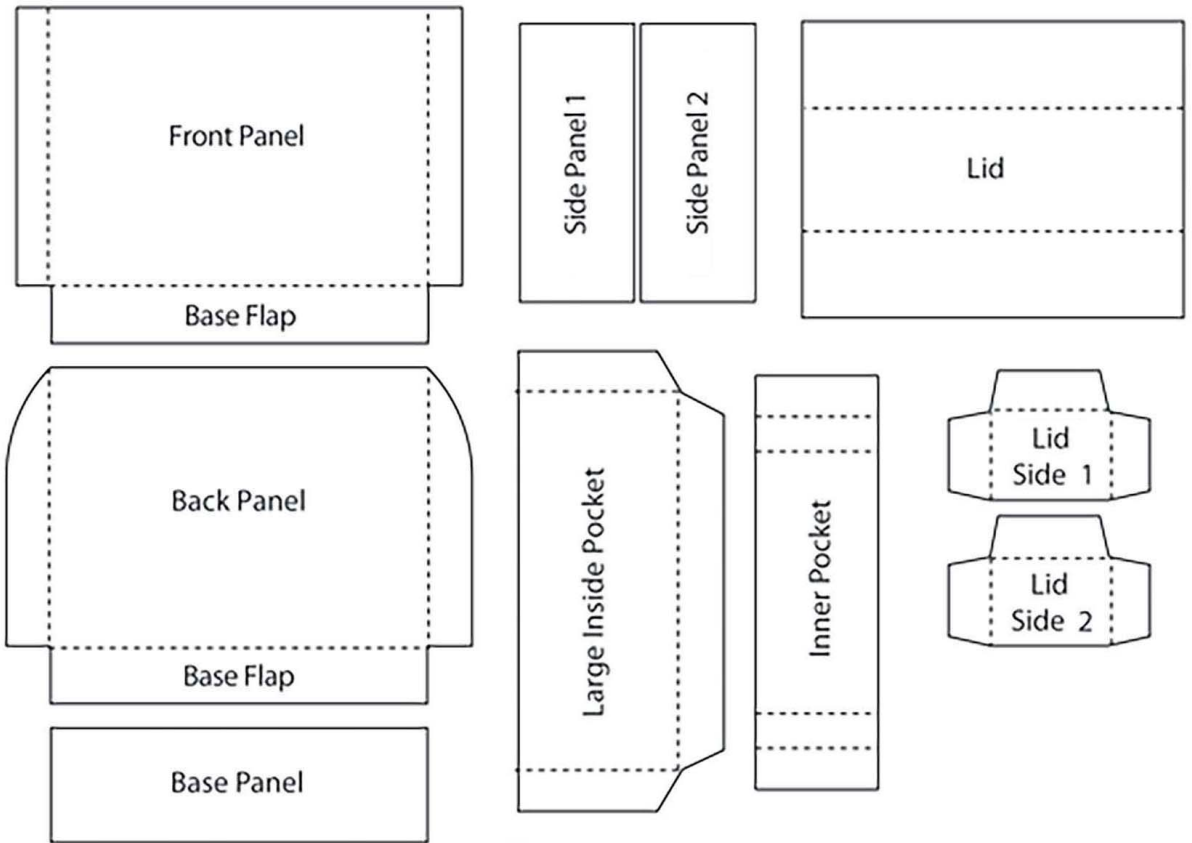
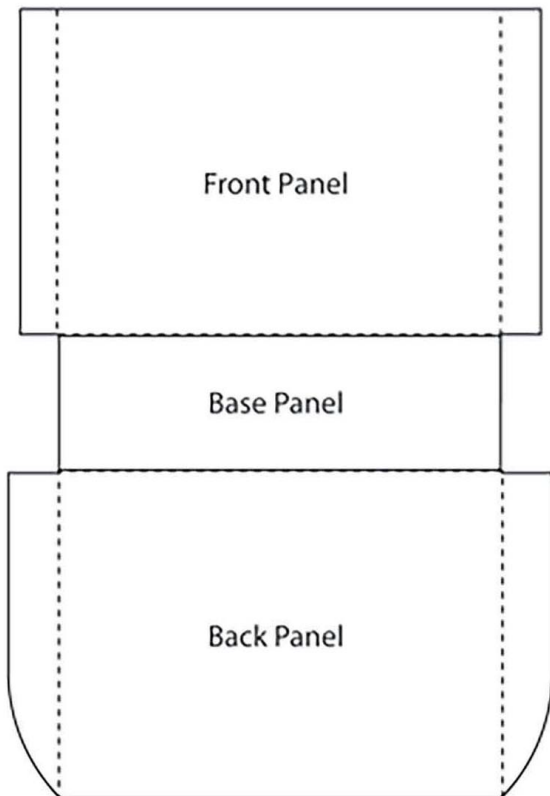


These images are for the rectangle box but the square box is built in the same way.

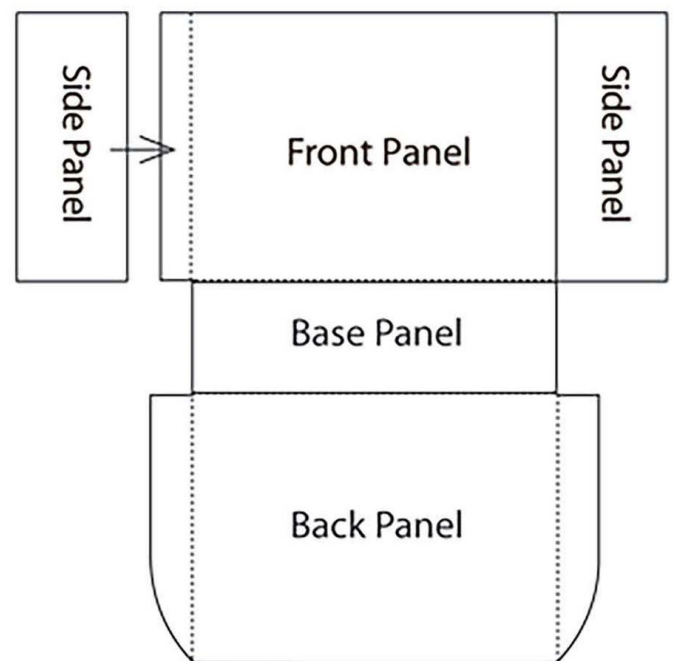
1. Cut out the pieces for the stationery box and fold on the score lines. If you are using the template version, you will need to cut two of the Side Panels and two of the Lid Sides.



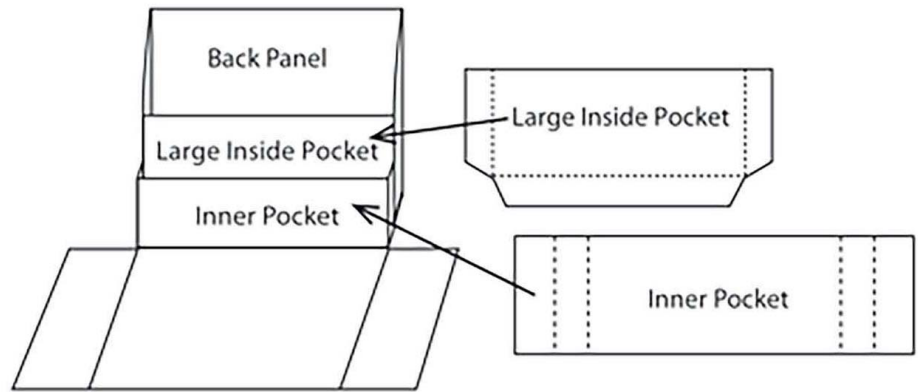
2. Lay the front and back panels flat and stick the base flaps onto the base panel so they meet in the middle.



3. Stick the side panels to the side flaps of the front panel of the stationery box.



4. Stick the large inside pocket to the inside side flaps of the back panel. Stick the small inside pocket to the front of the large inside pocket.



5. Fold the lid sides down and stick to the the tabs on the lid sides to the inside of the lid.

6. Your Stationery Box is now ready to embellish.

