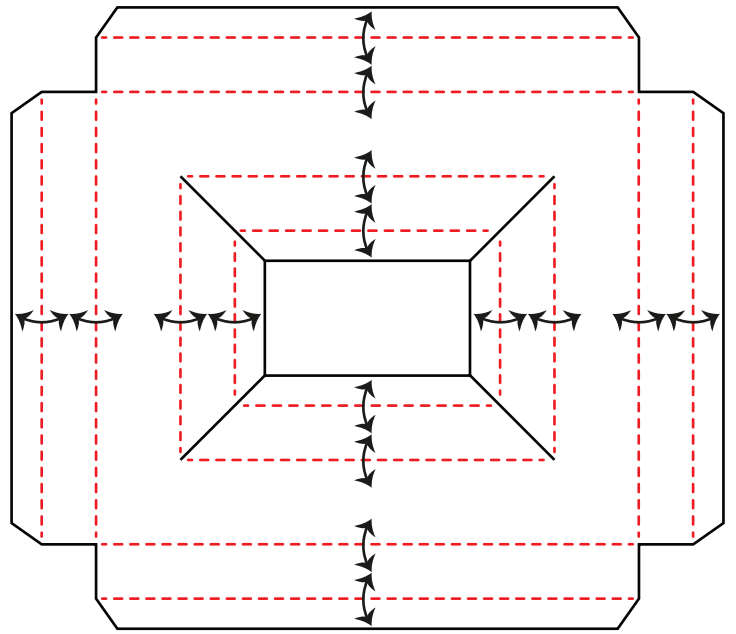
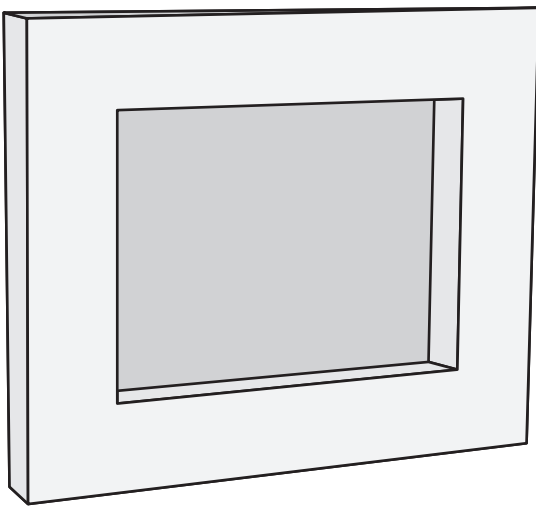




RECTANGLE BOX FRAME

1. Cut out the template, score along the dotted lines and cut along the solid lines. If you are using the SVG version these will have been done for you.
2. Mountain fold along the red dotted lines.
3. Attach the outer tabs around the edges of the rectangle piece. Push the inner side inwards and attach the inner tabs to the rectangle to finish the frame.



4. Mat the inside frame pieces within the frame to hide the gaps.
5. If you are using the stencil template, you will find the rectangle back and the inner sides with your mat & layer download. Cut these out and use as instructed in steps 4 and 5.

