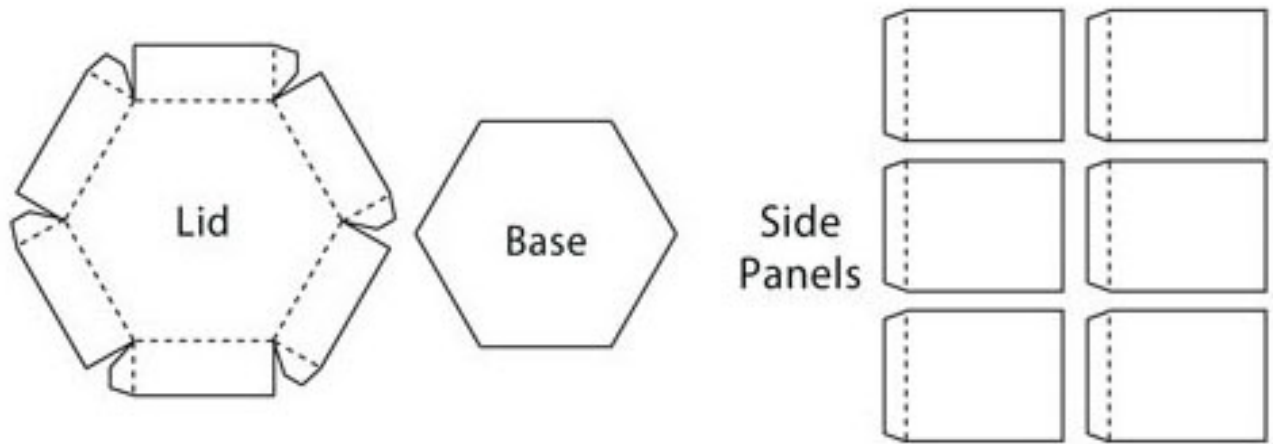


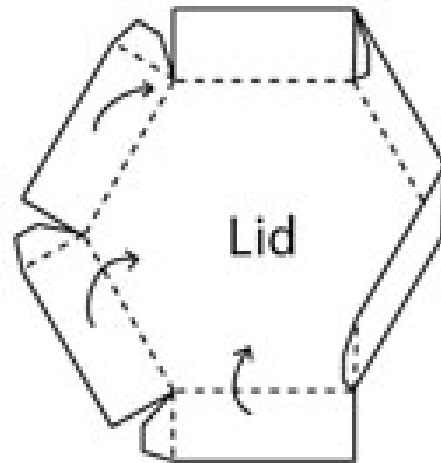
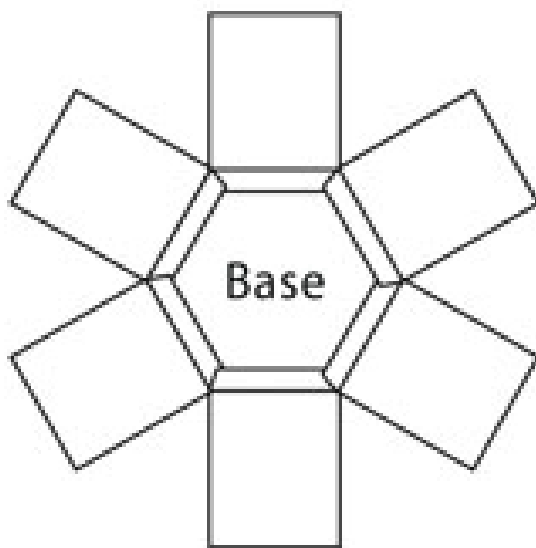
HEXAGON EXPLODING BOX

1. Cut out the templates and fold along any score lines.



2. Place double sided tape or glue along the tabs of the Side Panels and stick to each side of the Base.

3. Take the Lid and place double sided tape or glue on the tabs, fold them in and stick to the adjacent straight edge as you do along.



4. Fold up the Side Panels and place the Lid on the box. Decorate and embellish as required.

