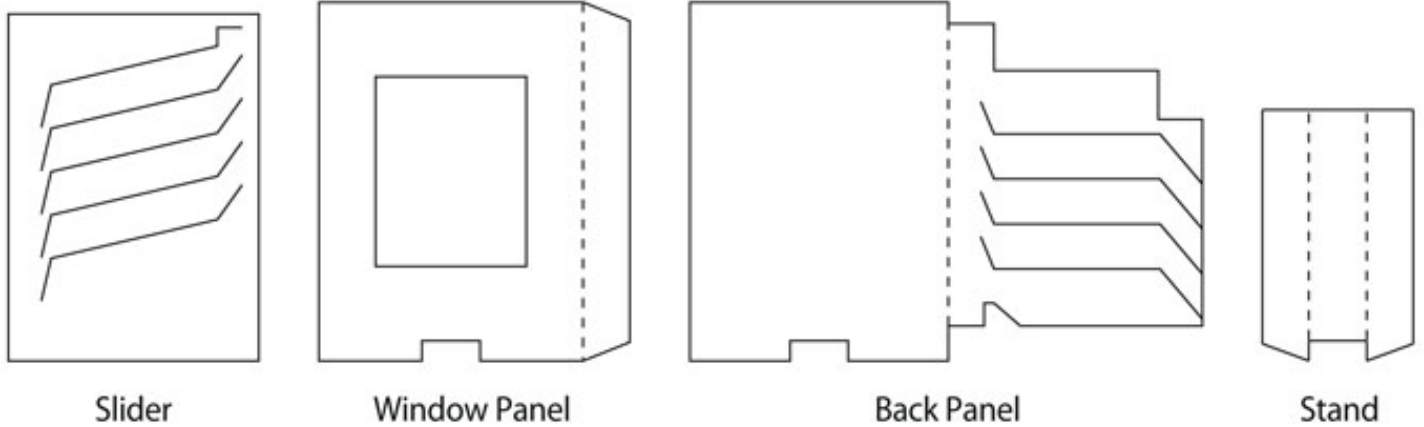


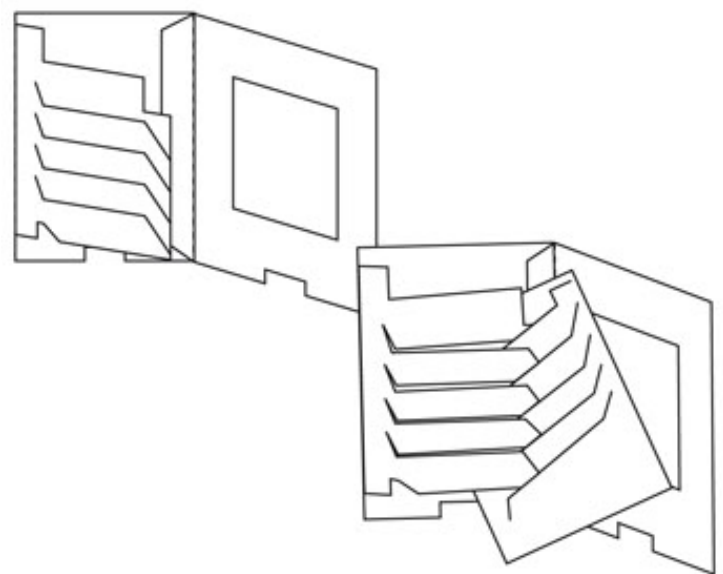
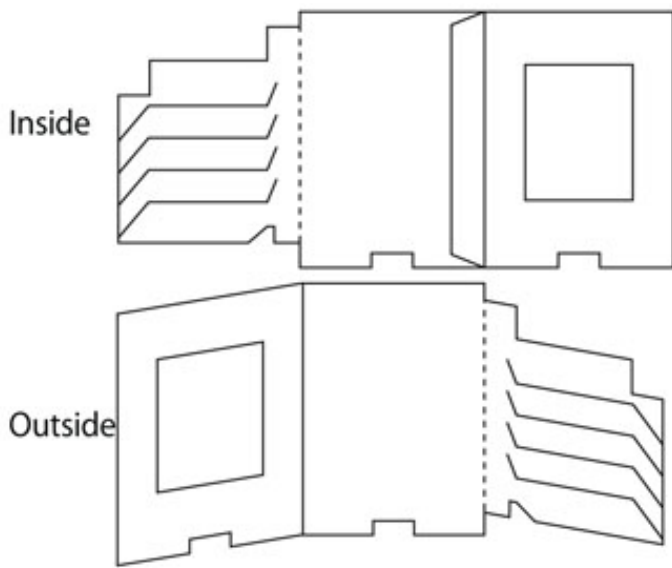
# DISSOLVING CARD

1. Cut out the templates and fold along any score lines.



2. Attach the Window Panel to the Back Panel with double sided tape or glue as shown.

3. Slide each flap of the design on the Back Panel through the slits on the Slider.



4. Secure the open side of the Window Panel with double sided tape. Bow the Window Panel slightly as you attach it so the slider can move easily.

5. Stick the stand centrally at the bottom of the back panel to support the card. The Dissolving Card is ready to decorate and embellish.

