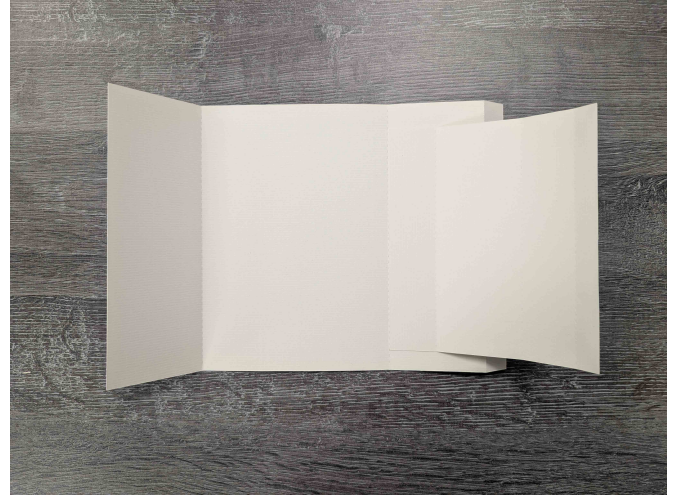


HIDDEN FOLD CARD INSTRUCTIONS



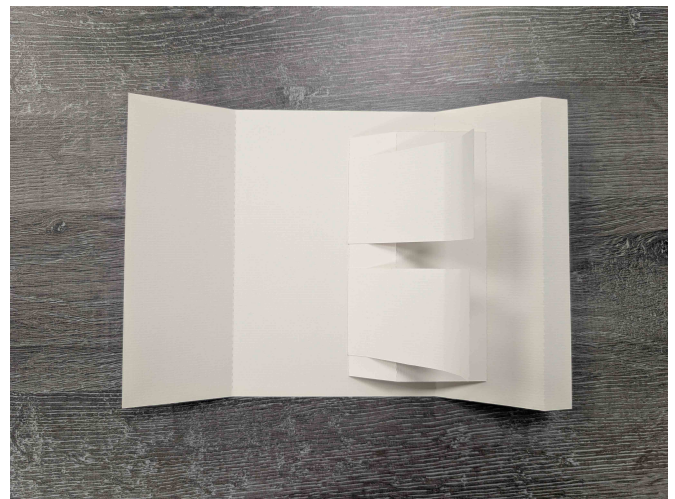
1. Cut out the Base Card template piece and score and fold on the score lines where instructed to create a gatefold type card. If you are using SVG files these will be done for you.



2. Cut out the Folded Panel 01 piece and score and fold where instructed. If you are using SVG files these will be done for you. Attach the larger edge fold to the inside of the right panel so it lines up with the fold.

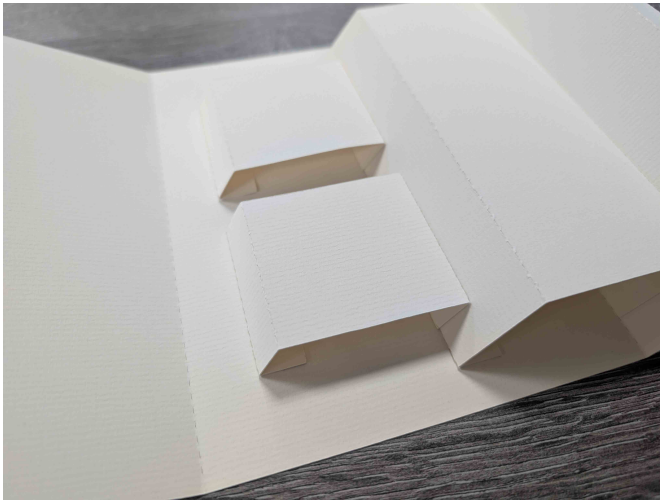


3. Attach the tab on the other side to inside back of the card so this folded panel sits square and folds flat.

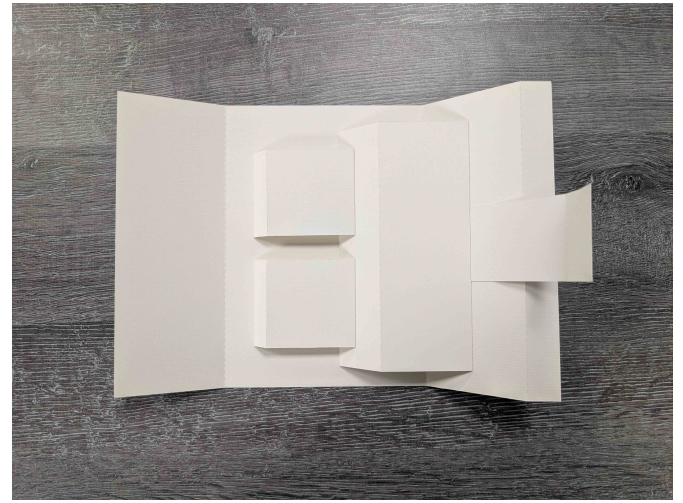


4. Cut out two Folded Panel 02 pieces and score and fold where instructed. If you are using SVG files these will be done for you. Attach the single fold sides to the side of Folded Panel 01 so they line up with the fold.

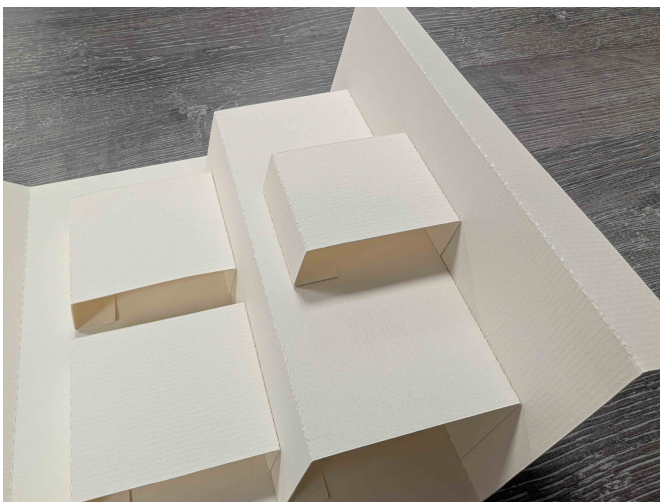
HIDDEN FOLD CARD INSTRUCTIONS



5. Attach the tabs on the other side to the inside back of the card so the folded panels sit square and folds flat.



6. Cut out the Folded Panel 03 piece and score and fold where instructed. If you are using SVG files these will be done for you. Attach the single fold side to the inside of the right panel so it sits on top of Folded Panel 01.



7. Attach the tab on the other side to the top of Folded Panel 01 so this folded panel sits square and folds flat.



8. Cut out the Belly Band, fold around the card and attach together on the back.