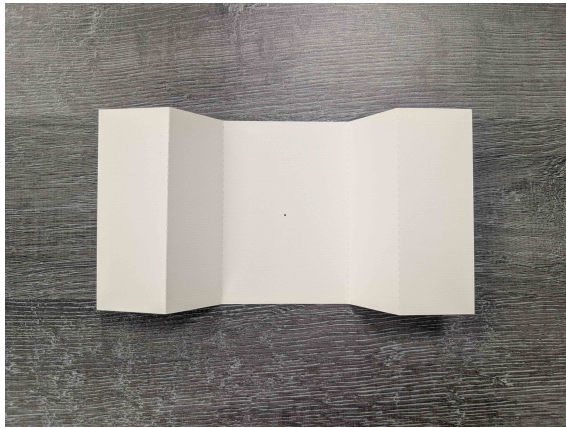
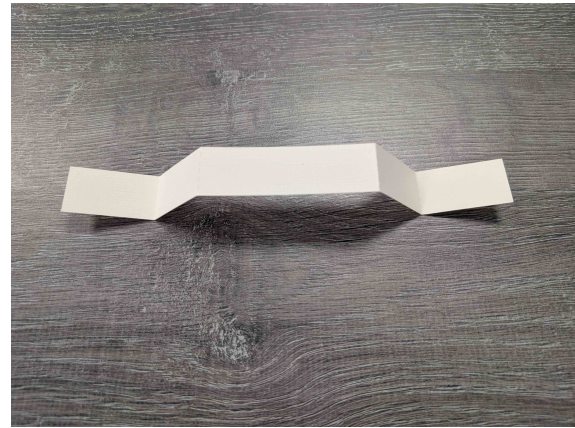


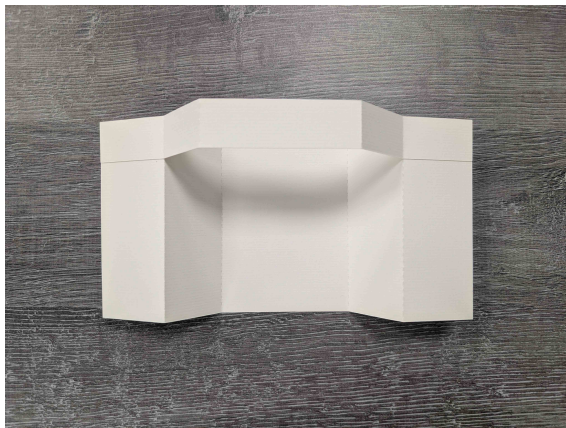
## DIMENSIONAL POP OUT CARD INSTRUCTIONS BY KATH WESTWOOD



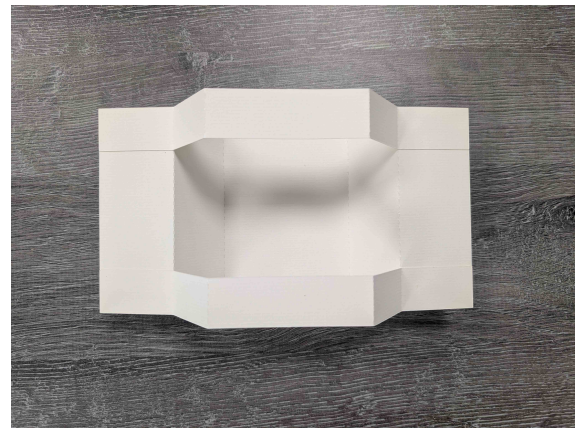
1. Cut out the Card Back template piece and score & fold on the score lines where instructed to.



2. Cut out the Card Front piece twice and score and fold where instructed to.



3. Attach the side panels of the Card Front piece to the side panels of the Card Back piece, lining up with the top edge of the card.



4. Repeat with the other Card Front piece on the bottom edge of the card.



5. Push the edges inwards to create the dimensional pop out card.